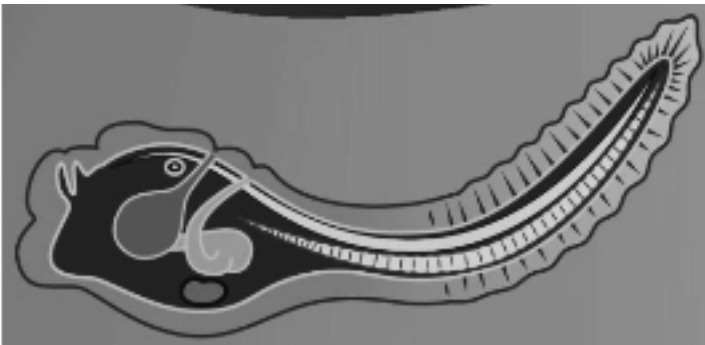


Common Ancestry Scavenger Hunt

Go to <https://learn.genetics.utah.edu/content/evolution/evidence/>

Find the information that completes the sentences.

1. All plants have structures in their cells called _____, which harness energy from sunlight.
2. (True / False) Plants are more closely related to animals than bacteria.
3. The oldest land plant fossils are about _____ million years old.
4. (True / False) Plants from long ago were much smaller than modern plants.
5. Flowering plants appeared about _____ million years ago.
6. _____ and _____ have only one body opening.
All other animals have two.
7. Cnidaria (jellyfish) and echinoderms (starfish) both have _____ symmetry.
8. Tunicates have shared ancestry with vertebrates. We know this because their larvae have a rigid structure, called a _____, running along their backs.



9. (True / False) Based on the fossil record, scientists believe that fish fins gradually changed over time to become amphibian legs.
10. Living birds are the descendants of _____ .