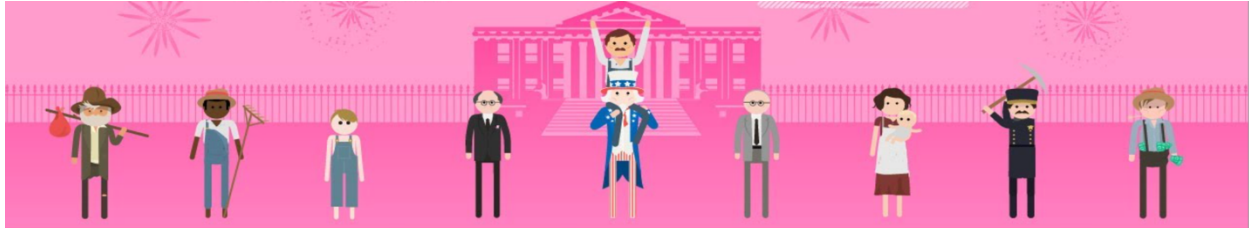


Name: _____

Date: _____

Period: _____

Crash Course US History #34: The New Deal



1. The New Deal redefined the role of the _____ for most Americans and it led to a re-alignment of the constituents in the Democratic Party.
2. Which two candidates ran in the 1932 presidential election?
3. What was FDR's motto and platform (what did he promise to do in his campaign?)
4. _____: a set of government programs intended to fix the Depression and prevent future depressions.
5. Three R's

gave help, usually money, to poor people in need	intended to fix the economy in the short-run and put people back to work	designed to regulate the economy in the future to prevent future depressions.

First New Deal:

6. What did the First New Deal comprise of?
 - a. _____: paid young people to build national parks
 - b. _____: barred commercial banks from buying and selling stocks
 - c. _____: established the National Recovery Administration designed to be government planners and business leaders working together to coordinate industry standards for production, prices and working conditions
 - d. _____: give welfare payments to people who were desperate.
7. Thought Bubble:
 - a. NIRA created _____ which appropriated 33 billion dollars to build stuff like the Triborough Bridge.
 - b. The _____ launched in November 1933 and eventually employed 4 million people building bridges, schools and airports.
 - c. Government intervention reached its highest point, however, in the Tennessee Valley Authority. What did this program do?

- d. The _____ basically gave the government the power to try to raise farm prices by setting production quotas and paying farmers to plant less food.
- e. Why did the Supreme Court intervene?

8. When the Supreme Court was invalidating acts and programs, FDR threatened to:

Second New Deal:

9. _____: guaranteed workers the right to unionize and it created the National Labor Relations Board to hear disputes over unfair labor practices.

10. Mystery Document: Who is the writer of the mystery document and why is their document so significant/influential/important to American history?

11. _____: included unemployment insurance, aid to the disabled, aid to poor families with children, and of course retirement benefits. It was, and is, funded through payroll taxes

12. What did the Works Progress Administration (WPA) do?

Conclusion:

13. How did the New Deal change American politics?

14. Explain: Did the New Deal end the Depression?

15. Explain: Was the New Deal Important?

